

Parks of the Perth Hills

The place to...

Be...

See...

Do...



Serpentine National Park

Park Guide

Park Facts

Where is it?	26km south of Armadale, off South West Highway into Falls Road.
Traveling time:	1 hour 10 min from Perth.
Fees:	Entry fees apply.
What to do:	Bushwalking, picnicking, wildlife observation, photography.
Facilities:	Electric barbecues, toilets.
Best Seasons:	Spring for wildflowers, winter for the waterfall
On-site information:	Rangers, information shelter, trailside signs, Park Notes.
2007 Streetsmart :	Map 646, Ref C4

Healthy Parks
Healthy People



The proximity of Serpentine National Park to Perth has made it a popular day visit area. The park was increased in size to 4500 hectares in 1988. The name 'Serpentine' has its origins from the early settlers of the region. The area was named after the Serpentine in England. The shape of the river, which reminded the early settlers of a serpent, also contributed towards naming the general region where the park is located.

The park is on the Darling Scarp, the western edge of a huge, titled ancient plateau. Past weathering has resulted in distinct landscapes of lateritic uplands, minor and major valleys, and abrupt scarps. The Serpentine River contributes to the landscape with the steep slopes of the river valley and resistant granite outcrops giving rise to the unique feature of the park – the Serpentine Falls. In winter, the river rushes down a sheer granite face, polished by past running water, cascading 15 metres into the rock pool below.



Facilities

The Serpentine Falls area can be reached from the main entrance off the South West Highway. There is a sealed loop road and carpark, a large lawned area with shaded picnic tables, gas barbecues and toilets with access for people with disabilities.

Picnic areas can also be found at the Serpentine Dam and Pipehead Dam areas, with picnic and barbecue facilities. These water supply dams and the picnic areas are managed by the Water Corporation.

Caring for Serpentine National Park



Be Careful: Your safety in natural environments is our concern, but your responsibility.

Be Clean: Put your litter in bins, or better still take it home with you.

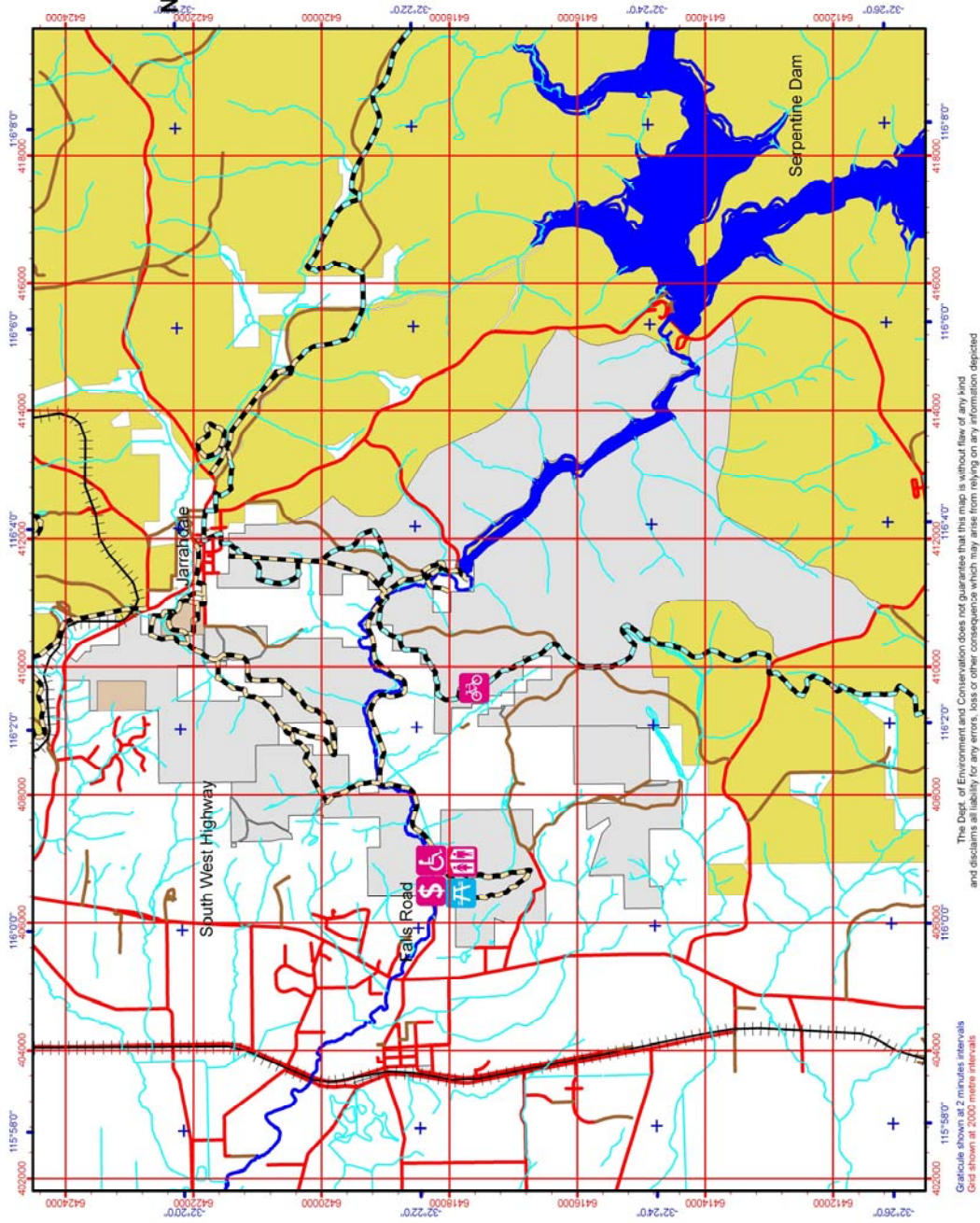
Be Cool: Because of the fire risk, no fires are permitted in the park. Please use the barbecues provided, or bring your own portable gas stove if you wish to barbeque.

Protect Animals and Plants: Dogs, cats and firearms are not permitted in national parks.

Stay on the paths: Please stay on the roads and walk trails throughout the park. Dieback is prevalent in some areas so walking off these tracks may spread the soil borne disease.

Be Aware: The river, and upper and lower rock pools contain water that is untreated.

SERPENTINE NATIONAL PARK



1:75,000 (A4)
0 475 950 1,900
Meters

Department of Environment and Conservation
Produced by Perth Hills District
Keiran McKinnon, Director General
Department of Environment and Conservation

The Dept. of Environment and Conservation does not guarantee that this map is without flaw of any kind and disclaims all liability for any errors, loss or other consequences which may arise from relying on any information depicted

Further Information



National Park Rangers are always pleased to help you make your visit more enjoyable and informative. Do not hesitate to contact them if you need information or assistance.

Serpentine National Park
Tel: (08) 9525 2128
Fax: (08) 9525 7022

Perth Hills National Parks Centre
Allen Road
Mundaring WA 6073
Tel: (08) 9295 2244
Fax: (08) 9295 3247

Website: www.naturebase.net

Safety is our concern, but your responsibility. Have fun and stay safe.

While the Department of Environment and Conservation has taken care in preparing this Park Note, it is provided for general purposes only, and DEC does not accept responsibility or liability for the results of specific action taken on the basis of this information nor for any errors or omissions.